



SSBC REAL ESTATE PVT. LTD.
Corp. Off.: B-207-A, Rajendra Marg,
Bapu Nagar, Jaipur-302015
T: +91 141 402 3455, 402 3466



Su-prem
2, 3 & 4 BHK Super Luxury Apartments

Splendid & luxurious living redefined here...

For corporate deals, call : +91 90019 94360
For project information, call : +91 93528 44144
sales@ssbgroup.com, www.ssbgroup.com



Land owner:
PANKAJ BHATNAGAR

Disclaimer: This brochure is not a legal document and just describes the developer's intended conceptual plan. Specifications and details provided are tentative and may change at sole discretion of developer and/ or the architects.



PROJECT HIGHLIGHTS:-

superior to all others in luxury, amenities and extent.

Situated at the priced location of Jaipur

Vaastu friendly layout

Air conditioned gymnasium

Indoor games

Video Door phone

Exclusive Entrance Waiting Lobby

CCTV Camera in Common Area

Ample Open & Basement parking

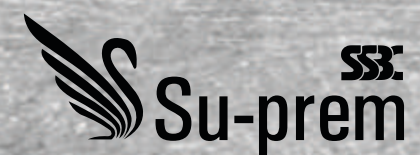
Designer Security Cabin

Rain Water Harvesting

100% power back up in common area & in

every flat up to 1kw

Earth quake resistance structure



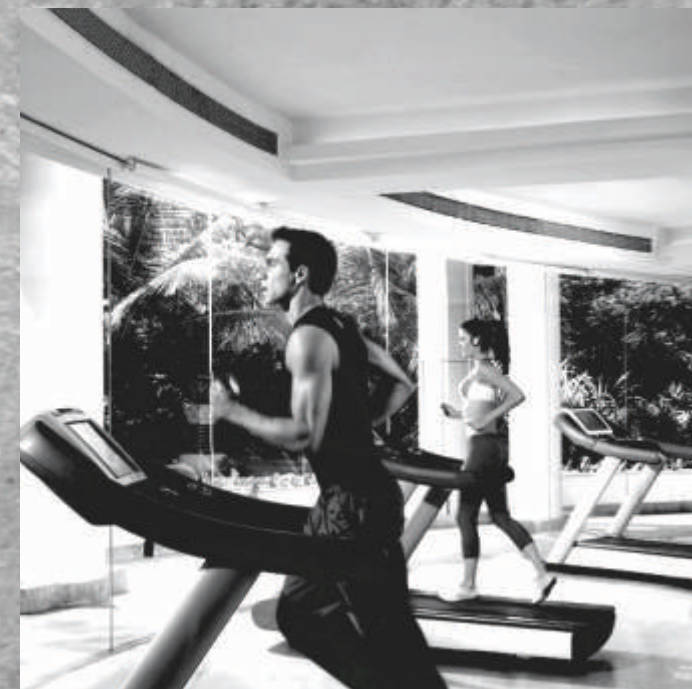
a project that has been designed to epitomize luxury, offering a host of amenities with unparalleled location to enjoy for the residents and elevate their life & lifestyle.

Security



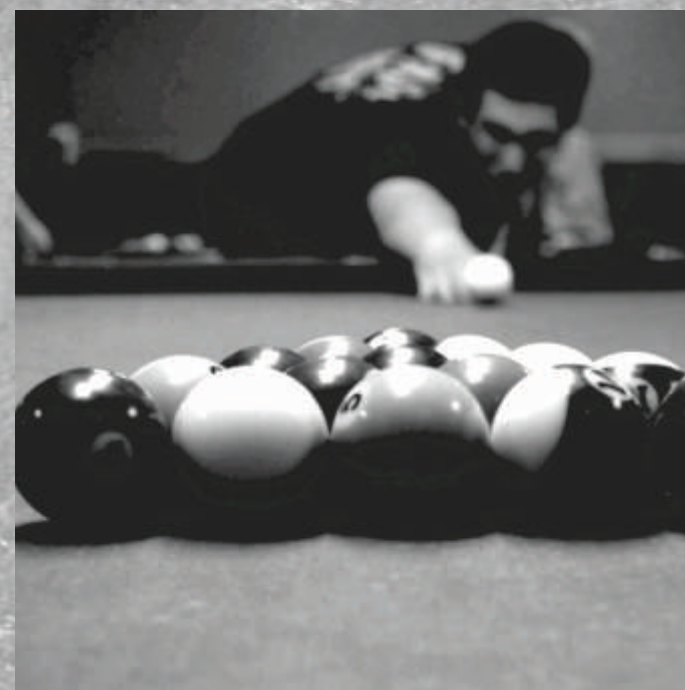
Location

Health



Luxury

Amenities

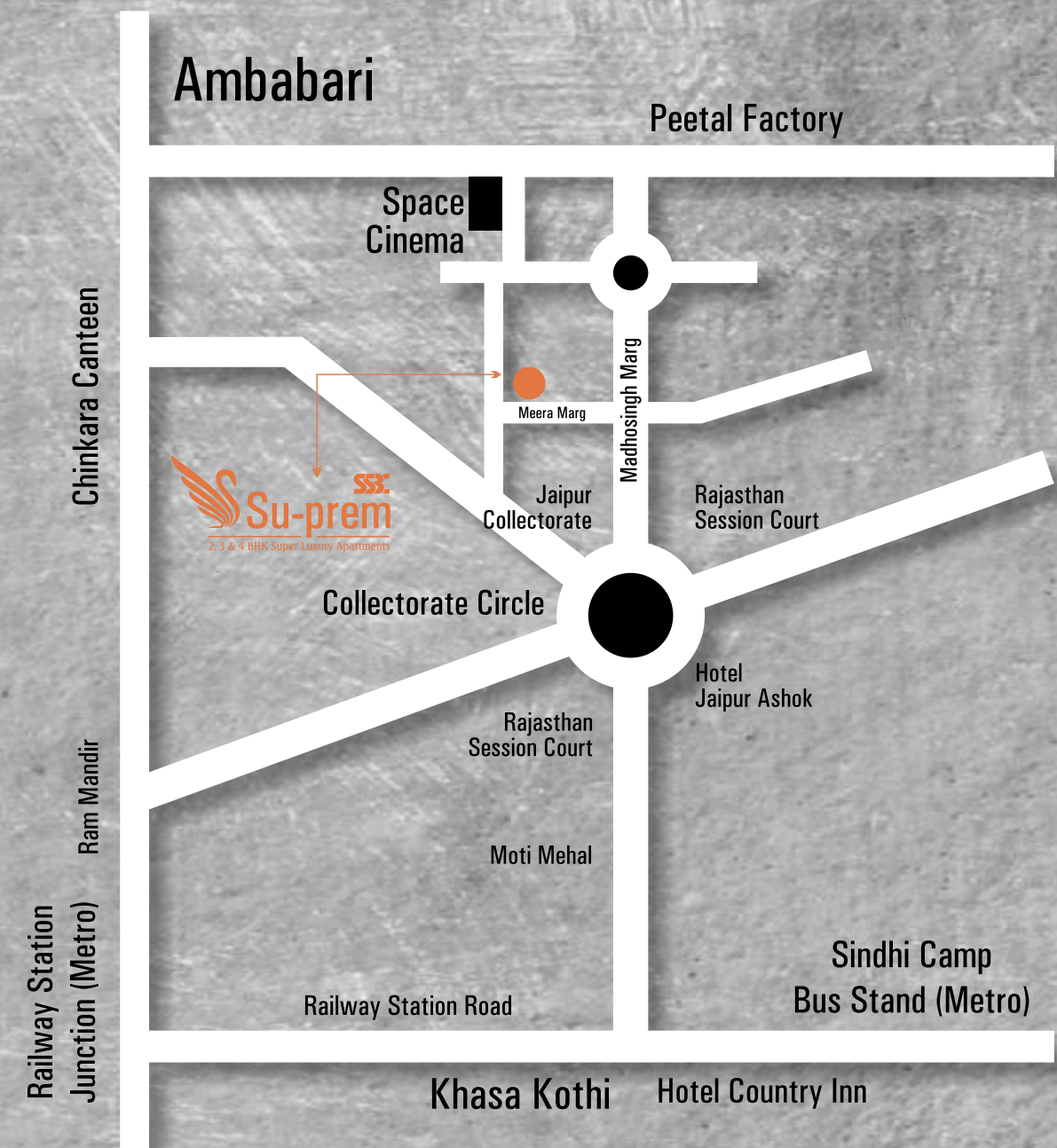


unparalleled

an unparalleled location like no other

a strategic location on the well developed area enjoying the best of both worlds.

a location that enjoys the peace, calm and serenity of nature yet near to the commercial & entertainment hub of the city.



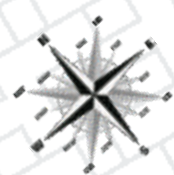
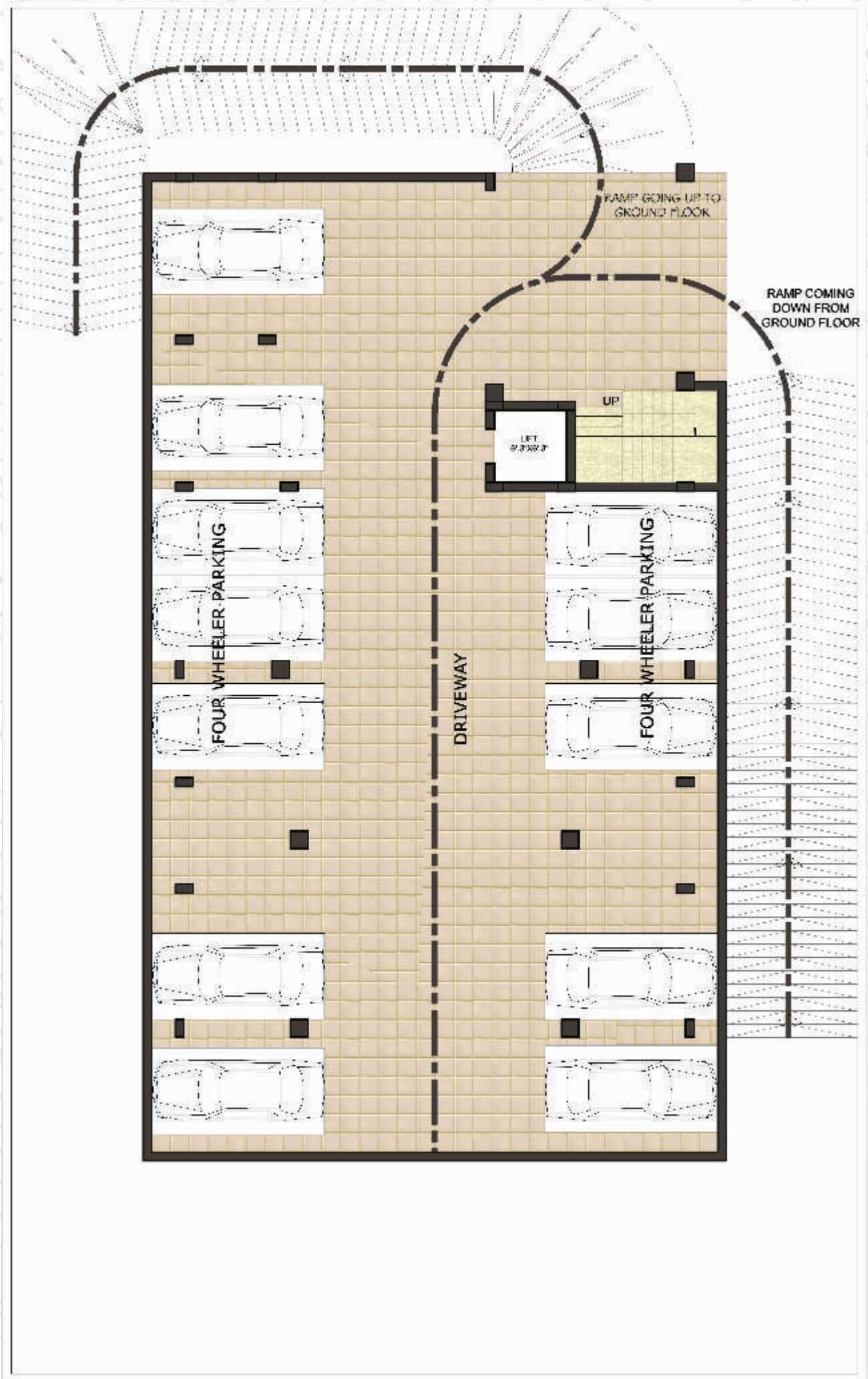
Location
that you've always looking for!

Near Collectorate Circle, Banipark, Jaipur

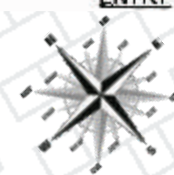
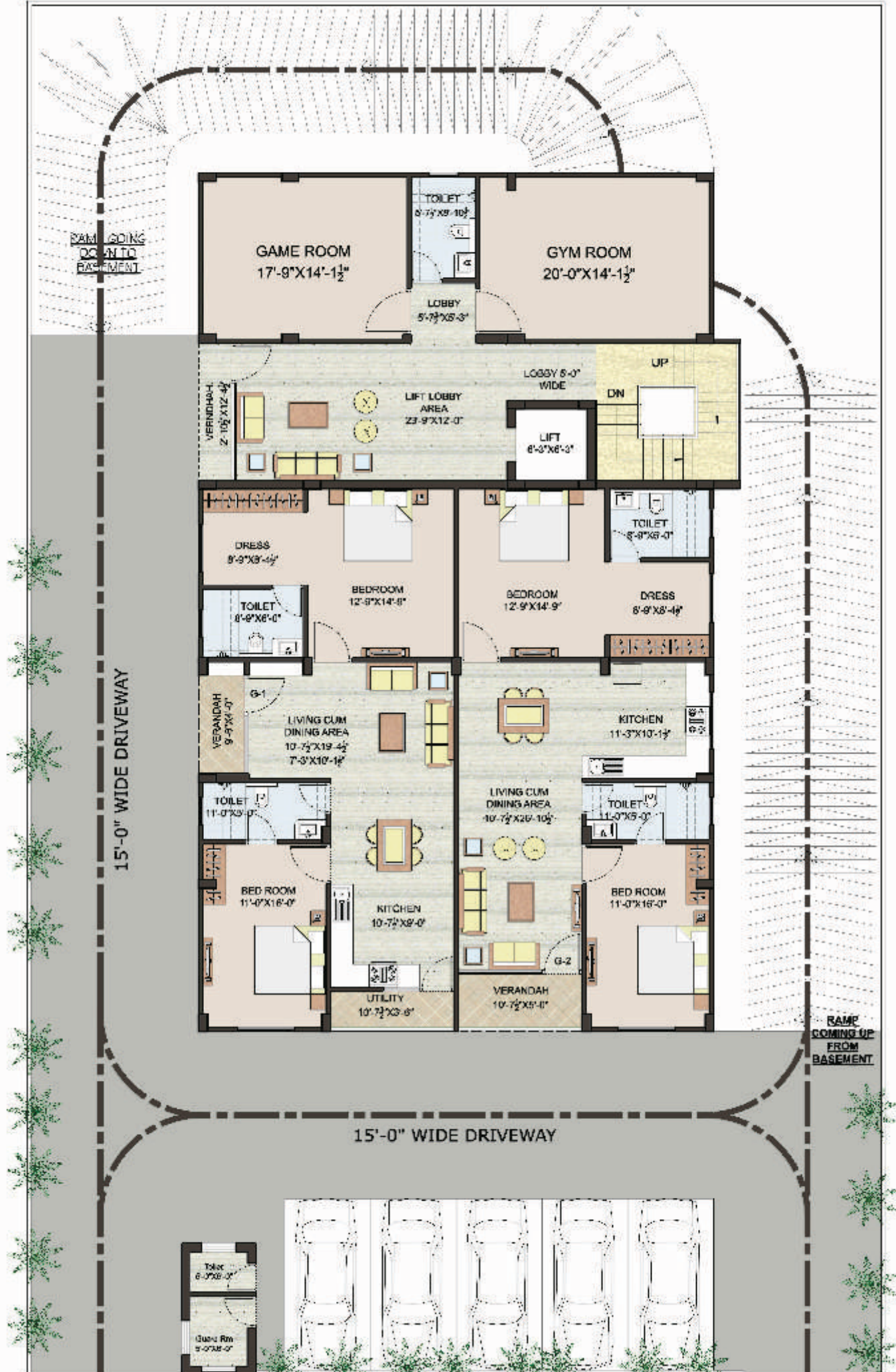
3 min. drive to Sindh Camp Bus Stand

3 min. drive to Jaipur Junction

Many reputed hospitals, Schools, Educational Institutions
Banks, Hotels, daily utility market area and movie theater
nearby the project.

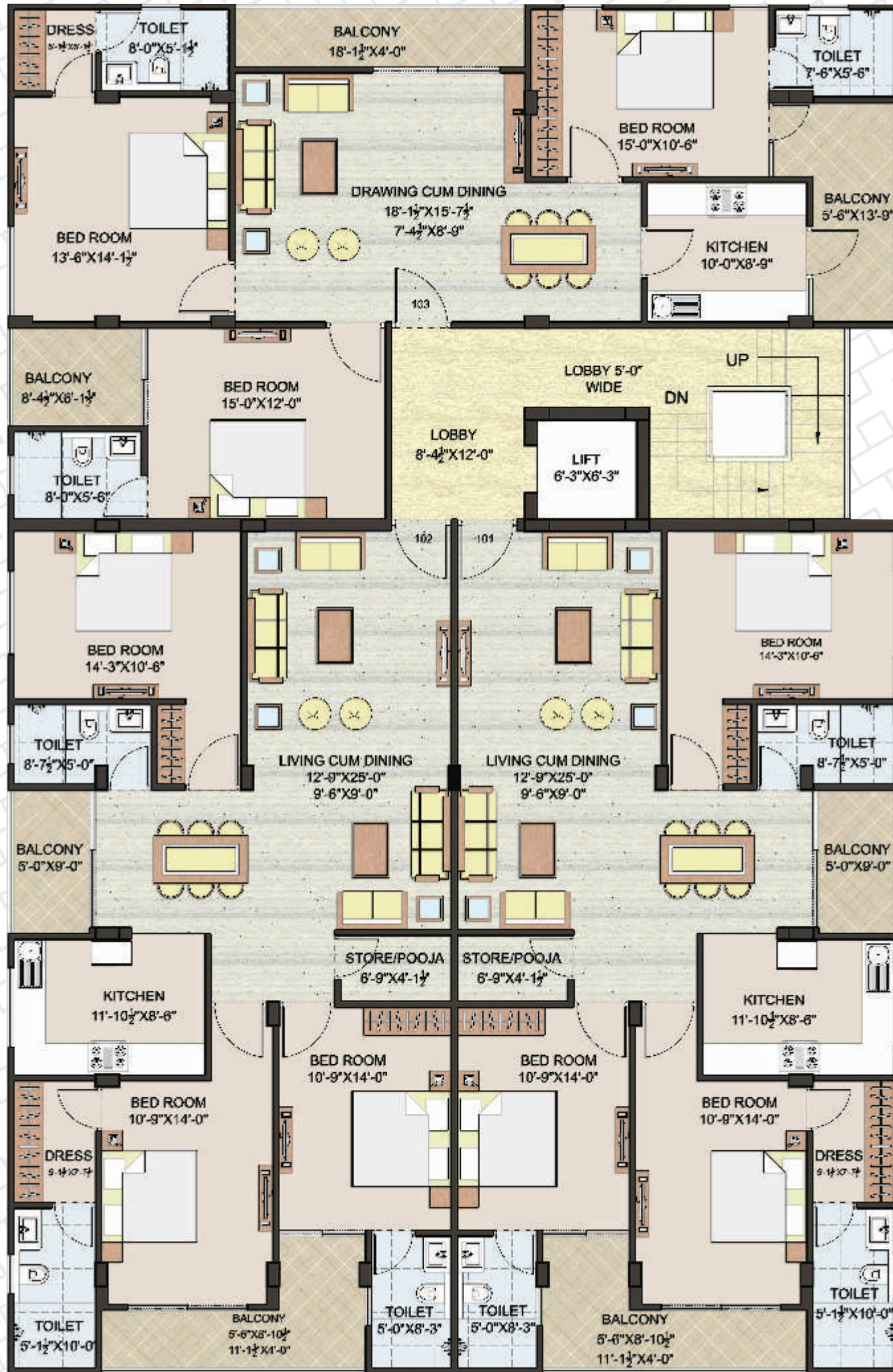


 Basement Floor



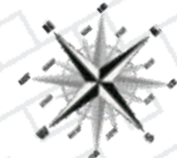
 Ground Floor

Flat No.	G-1	G-2	Total
Salable Area	1430 Sqft.	1430 Sqft.	2860 Sqft.



Typical Floor
1st to 3rd floor

Flat No.	101	102	103	Total
Salable Area	1986 Sqft.	1986 Sqft.	1913 Sqft.	5884 Sqft.



Terrace Floor

Flat No.	Pent. H.	Total
Salable Area	927 Sqft.	927 Sqft.



Exceeding all expectations

unique in every aspect of
quality, luxury, design & location.

2, 3 & 4 BHK Super Luxury Apartments



Salient Feature

Structure :

RCC Framed Structure with infill brickwork, designed in compliance with seismic zone II. Adequately fulfilling all earthquake safety requirements.

Living /Dining Areas

Flooring : Italian marble
Wall finishes : Royal paint on P.O.P finish
Ceiling Finishes : Designer false ceiling with concealed LED light

Bedrooms

Flooring : Double charged or digital vitrified tile / laminated wooden flooring in Master Bed Room (Johnson / Kajaria / Somani / Nitco etc.)
Wall Finishes : Royal paint on P.O.P finish
Ceiling Finishes : Royal paint on P.O.P finish
Wardrobe : Wooden wardrobe as/design

Kitchen

Modular Kitchen : Modular Kitchen with chimney
Flooring : Matt Finish Stain and abrasion resistant Vitreous Tile (Johnson / Kajaria / Somani / Nitco etc.)
Wall Finishes : 2' high Ceramic Tiles dado above counter. Royal paint on P.O.P finishes Over Plaster in remaining areas.
Ceiling Finishes : royal paint on P.O.P finish
Granite counter : Z black or equaling Granite
Fixtures & Fitting : Stainless Steel Sink and Mixer of Standard makes and brands installation of Geyser. (Jaquar, Kolhar, roca etc)
R. O. : Providing R.O. Water Purifier of standard brand

Toilets

Flooring : Matt finished/Anti-skid ceramic tiles. (Johnson / Kajaria / Somani / Nitco etc.)
Wall Finishes : Glazed/ Matt finished Ceramic Wall Tiles Up to Dado level (approx.8') Oil Bound Distemper on plastered surfaces above Dado level. (Johnson)
Ceiling Finishes : fall ceiling with concealed lights
Vanity Counter : Granite
Sanitary ware : Washbasin and European Water Closet (EWC) of standard makes and brands. (Jaquar, Kolhar, American Standard, Cera etc)
C.P Fitting & Accessories : Basin Mixer, Shower Mixer With Bath Spout & Overhead Shower Health Faucet along with necessary Angle Valves etc. of standard makes & brands (Jaquar, Mark, Hanse Grohe, Cera, Kolhar etc)
: All Toilets, Floors provided with suitable and adequate water proofing treatment provision for installation of Geysers.
Glass Partition : Glass partition in shower area

Balconies / Terrace

Flooring : Matt finished Ceramic Tiles (Johnson / Kajaria / Somani / Nitco etc.)
Wall finishes : Exterior Grade Paint on Plaster
Ceiling Finishes : sera sheet with polish in ceiling at Front terrace
Handrail & Parapets : SS & Glass Railing as/Elevation

Staircase

Flooring : Polished store (Marble/ Granite) on Tread, Risers & Landings.
Railing : SS Handrails/glass railing
Ceiling Finishes : Oil Bound Distemper on Plaster



Common Passage

Flooring : Polished Marble/Granite/tiles
Wall finishes : Oil Bound Distemper on Plaster
Ceiling Finishes : Oil Bound Distemper on Plaster

Roof

PCC finish over suitable Waterproofing and Insulation Treatment(COBA or equivalent)

Doors & Windows

Main Door : Designer Flush door with both side veneer
Internal Door : Designer Flush door with both laminated
Hardware : Locks, Handles and Knobs (Mortise and Cylindrical Locks) from reputed makes and brands. High quality Steel/Brass Hardware. (Srisma Fills, RAK, Godrej, etc.)

Windows & External Glazing : Euro Profile aluminum /UPVC doors/window

External Wall Finishes

External grade Anti-Algal Paint from reputed makes and brands/Tiles and stone cladding as/elevation

Electrical Wiring And Installation

Fixtures & Fittings wiring : IS Compliant Modular Switches/Sockets. Distribution Boxes & Circuit Breaker from standard makes and brands.(legrand, MK, North-West, havells, etc)
: IS Compliant Copper Wiring in concealed conduits. (Finolex, RR Cable, Polycab, etc.)
: Adequate Provision for Light Points, Fan Points, Receptacles and Power Point all rooms.
: Providing Exhaust fans in Kitchens and Toilets
: Providing Concealed LED light in drawing dining false ceiling
: Providing Fans and One tube light in all rooms
: Electrical points, Copper Pipes, Drainage Provision for Air Conditioners provide in appropriate locations in Bedrooms and Living Room.(Paplival copper tube)
: Adequate Provision for TV and Telephone Points at Appropriate Locations.
: Provision for Invertor
: Provision for Centralized D2h
: Panic Switch & LPG Detector

Plumbing

IS Compliant CPVC water supply pipes with standard valves and accessories IS Compliant PVC Waste pipes and traps. (Astral, Supreme, etc.)



The SSBC Group is inspired by of its Chairman and MD Mr. Madan Lal Yadav who has emerged as a standing construction partner with may renowned brand names in real estate industries. His work experience, innovative approach meticulous execution is size to bloom the business into SSBC almost all spheres of development. And creating breathing land marks various

The Innovative approach of The SSBC Group has given new Identity to the Real estate industry of the Rajasthan, With the Magnitude of success since last Fifteen Years. Endowed with the ISO 9001-2008 with implementation of motto "Dream create Live"

The Projects commissioned by The SSBC Group are symbol of precision, Integrity and attribute to modern innovative technology. The group is managed by highly qualified professionals to ensure goals and customer delight.

The Success attained by the Group has materialized due to its strong and successful projects.

SSBC group now is all set to mesmerize you with its all new Range of Projects Like "SSBC Su-prem "at banipark, which will really move you with modern life style endured with intelligent planning, Execution, transparent approach and professional maintenance above all value for money and Excellent investment

'Welcome to SSBC Group'



Legacy Continue...