

TYPICAL FLOOR PLAN
(FIRST FLOOR TO FOURTH FLOOR)

AREA SCHEDULE FOR TYPICAL FLOOR

S. NO.	UNIT NO.	BUILTUP AREA	SALABLE AREA (+30%)
1	101	1665	2425

PROJECT:- PROPOSED APARTMENT AT BAPU NAGAR, JAIPUR

DRAWING: TYPICAL FLOOR PLAN (FIRST FLOOR TO FOURTH FLOOR)

ARCHITECTS:-

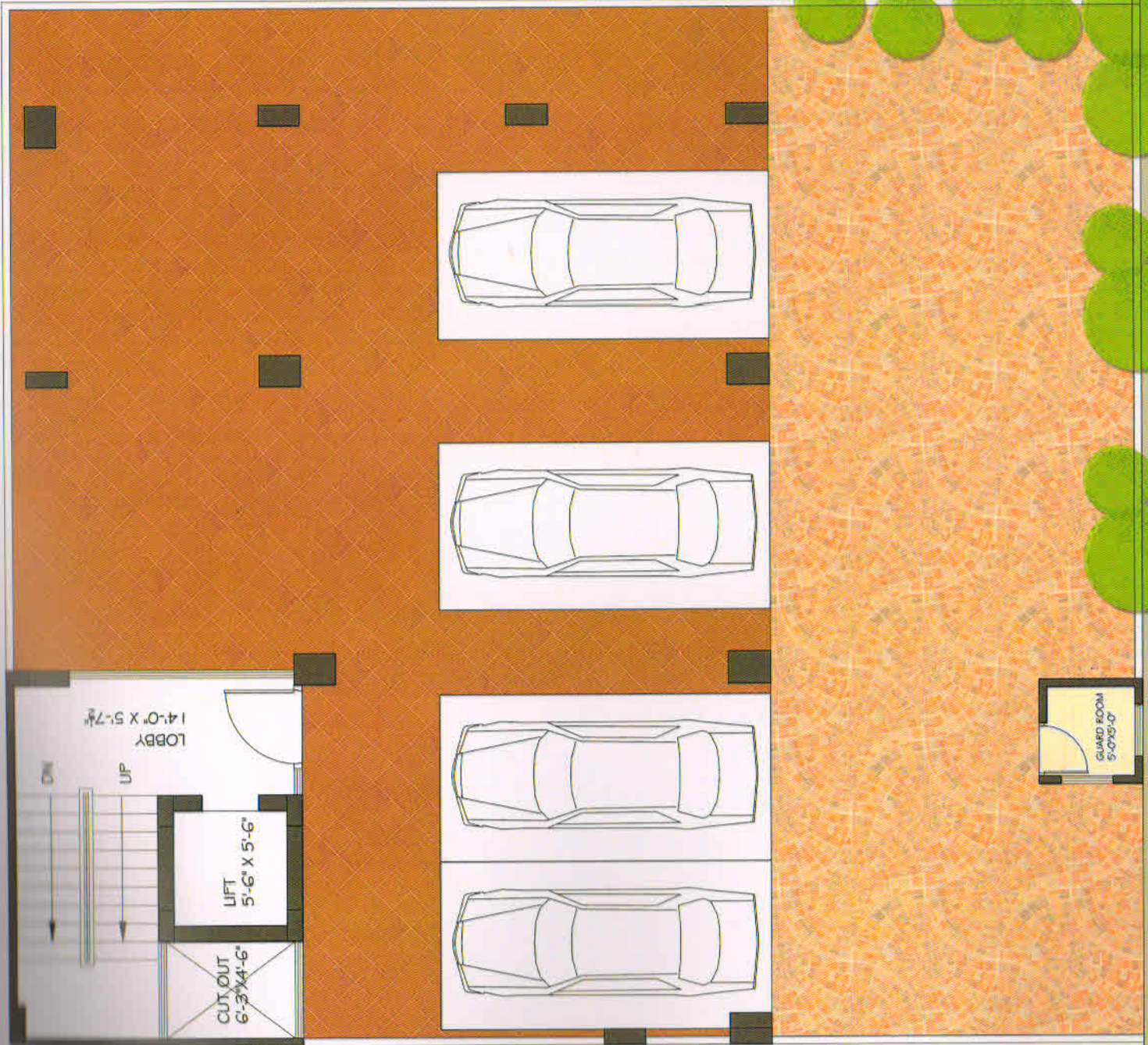
KAPPRIS INNOVATION

VAISHALI NAGAR, JAIPUR

PHONE: 9649905326

email:-kapprisinnovation@gmail.com





40'-0" WIDE ROAD

STILT FLOOR PLAN

PROJECT:-	PROPOSED APARTMENT AT BAFU NAGAR, JAIPUR	ARCHITECTS:-	KAPPRIS INNOVATION
DRAWING:	STILT FLOOR PLAN		VAISHALI NAGAR, JAIPUR PHONE: 9649905326 email:-kapprisinnovation@gmail.com

Salient Feature -

Structure	RCC Framed Structure with infill brickwork, designed in compliance with seismic zone II. Adequately fulfilling all earthquake safety requirements.
Living /Dining Areas, Lobbies/Passage	<p>Flooring : Italian marble</p> <p>Wall finishes : Royal paint on P.O.P. finish</p> <p>Ceiling Finishes : Designer false ceiling with concealed LED light</p> <p>Glass Partition : Designer Glass Partition Between Drawing room and dining-living area</p>
Bedrooms	<p>Flooring : Italian marble/ laminated wooden flooring</p> <p>Wall Finishes : royal paint on P.O.P. finish</p> <p>Ceiling Finishes : designer false ceiling with concealed led & cove light</p>
Kitchen	<p>Modular Kitchen : Fully Modular Kitchen of High Standard</p> <p>Flooring : Matt Finish Stain and abrasion resistant Vitreous Tiles</p> <p>Wall Finishes : 2' high Ceramic Tiles dado above counter. Royal paint on P.O.P. finishes Over Plaster in remaining areas.</p> <p>Ceiling Finishes : designer false ceiling with concealed lights</p> <p>Granite : Blue pearl/ brown pearl</p> <p>Fixtures & Fitting: Stainless Steel Sink and Mixer of Standard makes and brands installation of Geyser.</p>
Toilets	<p>Flooring : Matt finished/ Anti-skid ceramic tiles.</p> <p>Wall Finishes : Glazed/ Matt finished Ceramic Wall Tiles Up to Dado level (approx.7') Oil Bound Distemper on plastered surfaces above Dado level.</p> <p>Ceiling Finishes : designer false ceiling with concealed lights</p> <p>Vanity Counter : Granite/Marble</p> <p>Sanitary ware : Washbasin and European Water Closet (EWC) of standard makes and brands. (Jaquar, Kolhar, Cera etc)</p> <p>C.P. Fitting & Accessories : Basin Mixer, Shower Mixer With Bath Spout & Overhead Shower Health Faucet along with necessary Angle Valves etc. of standard makes & brands (Jaquar, Mark, Cera etc) : All Toilets, Floors provided with suitable and adequate water proofing treatment provision for installation of Geysers.</p>
Balconies/ Terraces	<p>Flooring : Matt finished Ceramic Tiles</p> <p>Wall finishes : Exterior Grade Paint on Plaster</p> <p>Ceiling Finishes : Wooden false ceiling In Front terrace</p> <p>Handrail & Parapets : SS & Glass Railing as/Elevation</p>

Servant's Room	<p>Flooring : Matt finished Ceramic Tiles</p> <p>Wall finishes : Oil Bound Distemper on Plaster</p> <p>Ceiling Finishes : Oil Bound Distemper on Plaster</p>
Servant's Toilet	<p>Flooring : Matt finished Ceramic Tiles</p> <p>Wall finishes : Glazed/Matt finished Ceramic Tiles up to Dado level (approx.7') Oil Bound Distemper on plastered surfaces above Dado level.</p> <p>Ceiling Finishes : Oil Bound Distemper on Plaster</p> <p>Sanitary ware : Washbasin and Water Closet (WC) of standard makes and brands.</p> <p>C.P. Fittings & Accessories : Bib Cock Ablution Tap With necessary Angle Valves etc. of standard makes and brands.</p>
Staircase	<p>Flooring : Polished store (Italian marble/Marble/ Granite) on Tread, Risers & Landings.</p> <p>Railing : SS Handrails</p> <p>Ceiling Finishes : Oil Bound Distemper on Plaster</p>
Common Passage	<p>Flooring : Polished Marble/Granite</p> <p>Wall finishes : Oil Bound Distemper on Plaster</p> <p>Ceiling Finishes : Oil Bound Distemper on Plaster</p>
Roof	PCC finish over suitable Waterproofing and Insulation Treatment(COBA or equivalent)
Doors & Windows	<p>Main Entrance Door :Painted Hardwood Frame and Polished Membrane Door /Laminated Flush DOOR</p> <p>Internal Door : Painted Hardwood Frame and laminated from both side</p> <p>Hardware : Locks, Handles and Knobs (Mortise and Cylindrical Locks) from reputed makes and brands. High quality Steel/Brass Hardware.</p> <p>Windows & External Glazing : UPVC/ Aluminium URO profile doors/window</p>
External Wall Finishes	External grade Anti-Algal Paint from reputed makes and brands/Tiles and stone cladding as elevation
Home automation	All Lights, A.C., TV are connected with home automation system. You can operate All electrical System with one tough of your mobile.
Electrical Wiring And Installation	<p>Fixtures & Fittings wiring: IS Compliant Modular Switches/sockets. Distribution Boxes & Circuit Breaker from standard makes and brands.</p> <p>:IS Compliant Copper Wiring in concealed conduits</p> <p>: Adequate Provision for Light Points, Fan Points, Receptacles and Power Point all rooms.</p> <p>: Exhaust fans in Kitchens and Toilets</p> <p>: Adequate Provision for TV and Telephone Points at appropriate Locations.</p> <p>: installation of ceiling fan, lights</p>
HVAC System	Installation of VRV system in complete flat

Electrical Wiring And Installation	Features & Fittings wiring: IS Compliant Modular Switches/Sockets. Distribution Boxes & Circuit Breaker from standard makes and brands. : IS Compliant Copper Wiring in concealed conduits : Adequate Provision for Light Points, Fan Points, Receptacles and Power Point all rooms. : Electrical points for Exhaust fans in Kitchens and Toilets : Electrical points, Copper Pipes, Drainage Provision for Air Conditioners provide in appropriate locations in Bedrooms and Living Room. : Adequate Provision for TV and Telephone Points at appropriate Locations. : Provision for Invertor
Plumbing	IS Compliant CPVC water supply pipes with standard valves and accessories IS Compliant PVC Waste pipes and traps.

Common Features –

- 1 24 hrs security by well trained security persons
- 2 Person lift provided
- 3 Earth quake resistance structure
- 4 Ample Car Parking
- 5 Video door phone
- 6 100% Power Back up for common areas
- 7 Rain Water Harvesting
- 8 Well furnished lift lobby at ground floor.
- 9 1 Boring for water supply
- 10 Transformer/DG as per requirements
- 11 VRV system
- 12 Home automation

Project Highlights-

Well-developed Residential area situated in Bapu Nagar .